



Client: VeloPep Labs, LLC
Accession #: 2604140256
Search Code: Velo2604140256
Received: 04/14/2026
Reported: 04/15/2026
Lot: KLOW-251022-01

Sample Summary

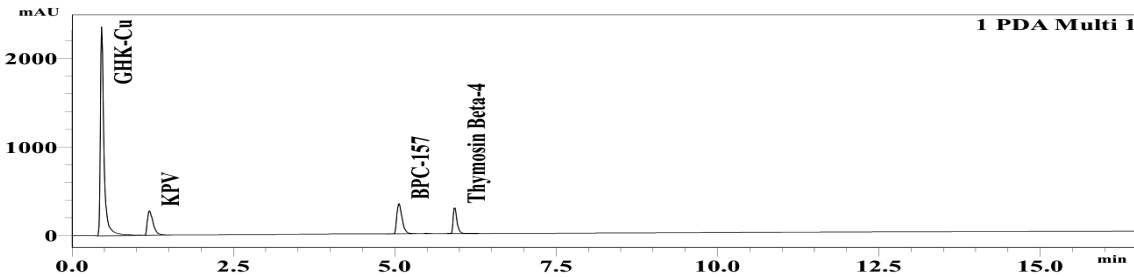
| | | | |
|--------------------|-------------------------|---------------------|--|
| Product: | Klow Blend 80mg | Purity: | 99.88% |
| Identity: | Confirmed | Net Content: | GHK-Cu - 47.63 mg KPV - 9.44 mg BPC-157 - 10.39 mg Thymosin Beta-4 - 10.08 mg |
| Appearance: | Blue Lyophilized Powder | | |

Analytical Results

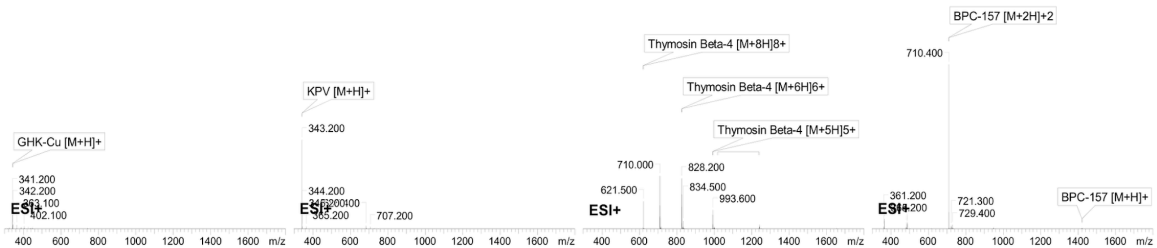
| Test | Result |
|-------------------------|--|
| Identity (LC-MS) | GHK-Cu/KPV/BPC-157/Thymosin Beta-4 |
| Purity (HPLC-UV) | 99.88% |
| Net Content | GHK-Cu - 47.63 mg KPV - 9.44 mg BPC-157 - 10.39 mg Thymosin Beta-4 - 10.08 mg |

Method: HPLC with UV detection coupled with mass spectrometry (LC-MS).

Chromatogram



Mass Confirmation



Alex Johnson

Principal Chemist

FreedomDiagnosticsTesting.com

Admin@FreedomDiagnostics.net

Proudly Owned and Operated in the USA

The peptide purity analysis reported here was conducted using LCMS/MS under standard laboratory conditions. This analysis is intended for informational purposes only and is specific to the sample(s) provided. The peptides tested are intended for research use only and are not approved for human or veterinary use, diagnostic, therapeutic, or clinical applications. Results should be interpreted by qualified professionals within the scope of the intended research. The accuracy and reliability of the test may be influenced by sample integrity, handling, and other experimental variables.